

STRING LIGHTS

A pocket guide
to your *String*
Lights setup



FLOS

Cone



Sphere



ENG Cone head with LED light source; cable length 12 or 22 meters.

ITA Testa a cono con fonte luminosa LED. Disponibile con cavo lunghezza 12 metri o 22 metri.

DEU Kegelpfopf mit LED-Lichtquelle. Erhältlich mit 12 Meter oder 22 Meter Kabellänge

FRA Tête conique à LED. Disponible avec un câble de 12 mètres ou 22 mètres.

ESP Cabezal cónico con fuente luminosa de LED. Disponible con cable de 12 o 22 metros de largo.

ENG Sphere head with LED light source; cable length 12 or 22 meters.

ITA Testa a sfera con fonte luminosa LED. Disponibile con cavo lunghezza 12 metri o 22 metri.

DEU Kugelkopf mit LED-Lichtquelle. Erhältlich mit 12 Meter oder 22 Meter Kabellänge.

FRA Tête sphérique à LED. Disponible avec un câble de 12 mètres ou 22 mètres.

ESP Cabezal esférico con fuente luminosa de LED. Disponible con cable de 12 o 22 metros de largo.

Wall mounting kit



ENG Wall mounting kit.

ITA Kit per il montaggio a muro.

DEU Kit für die Wandmontage.

FRA Kit d'installation au mur.

ESP Kit para el montaje mural.

Connection cable



ENG Extra connection cable to compose personal configurations.

ITA Cavo di connessione supplementare per comporre configurazioni personalizzate.

DEU Zusätzliches Anschlusskabel zum Zusammenstellen individueller Konfigurationen.

FRA Câble de connexion supplémentaire pour composer des configurations personnalisées.

ESP Cable de conexión suplementario para realizar configuraciones personalizadas.

Wallrose



ENG Wallrose. Feed up two heads maximum; three wayout for cables. Wall or ceiling installation.

ITA Rosone da parete o soffitto per l'installazione di massimo due teste con tre possibili vie di uscita.

DEU Wand-oder Deckenrosette für die Installation von maximal 2 Köpfen mit 3 Kabelaustrittsmöglichkeiten.

FRA Rosace pour mur ou plafond pour installer jusqu'à 2 têtes maximum 3 sorties de câbles possibles.

ESP Roseta de pared o techo para la instalación de 2 cabezales como máximo con 3 vías de salida posibles.

Floor switch



ENG Floor Switch. Feed up two heads maximum; Two wayout for cables. space to wrap 10 meters cable.

ITA "Floor Switch" per l'installazione di massimo due teste con due possibili vie di uscita per il cavo. Alloggio interno per arrotolare 10 metri di cavo.

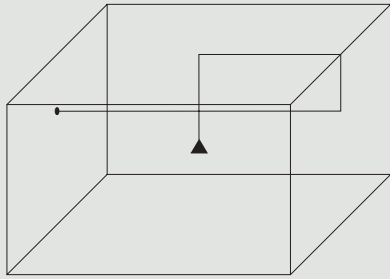
DEU "Floor Switch" für die Installation von maximal 2 Köpfen mit 2 Kabelaustrittsmöglichkeiten. Innenfach mit Platz für 10 Meter aufgerolltes Kabel.

FRA "Floor Switch" pour installer jusqu'à 2 têtes maximum avec 2 sorties de câbles possibles. Logement interne pour contenir 10 mètres de câble enroulé.

ESP "Floor Switch" para la instalación de dos cabezales como máximo con dos vías de salida posibles para el cable. Alojamiento interno para mantener enrollados 10 metros de cable.

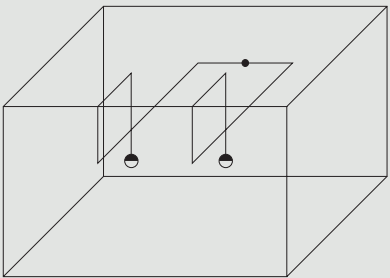
CONFIGURATIONS

Example No. 1



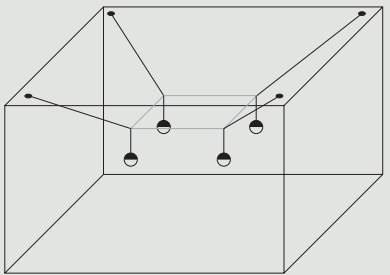
- 1 ×
- 1 ×

Example No. 2



- 2 ×
- 1 ×

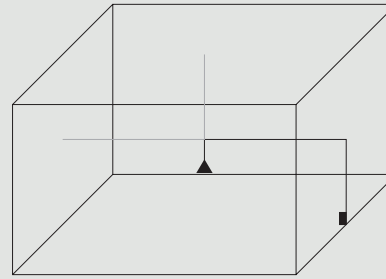
Example No. 3



- 4 ×
- 4 ×
- 1 ×

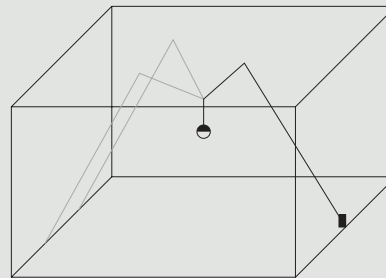
CONFIGURATIONS

Example No. 4



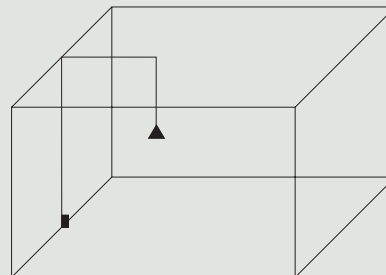
- 1 ×
- 1 ×
- 1 ×

Example No. 5



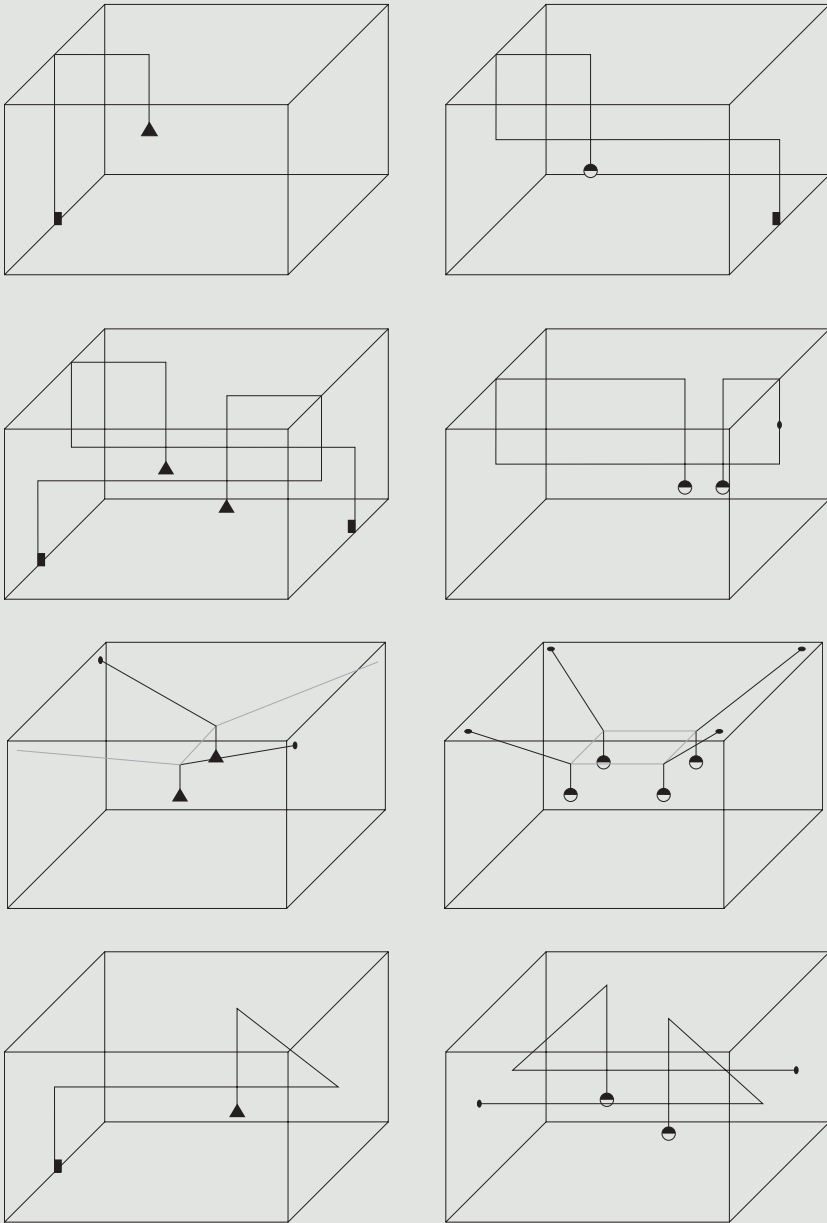
- 1 ×
- 1 ×
- 1 ×

Example No. 6

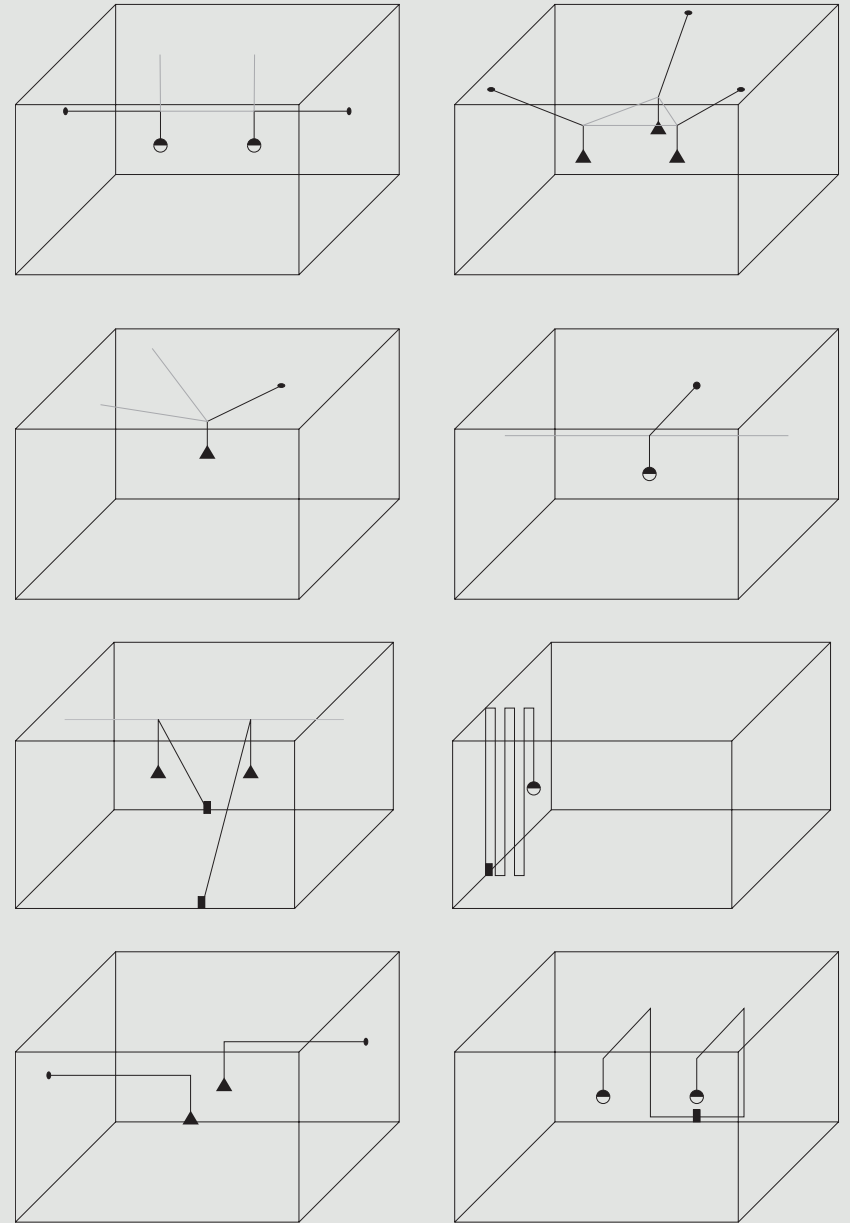


- 1 ×
- 1 ×

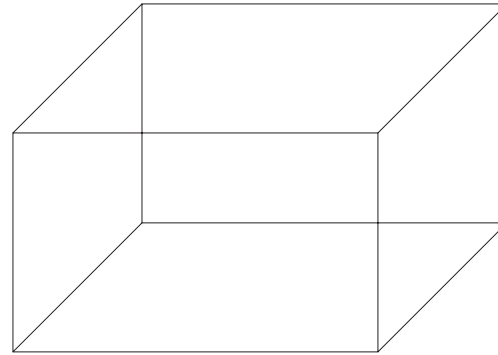
CONFIGURATIONS



CONFIGURATIONS



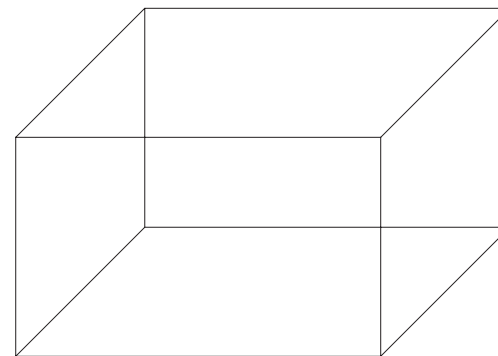
Sketch your own idea
for a String Light composition



— × —

— × —

— × —



— × —

— × —

— × —

For any further informations
please visit our website

www.flos.com

FLOS